

ALBADI TECHNICAL INDUSTRIES LLC

CABLE SYSTEMS

CABLE TRAYS

CABLE LADDERS

CABLE TRUNKING

ACCESSORIES

CABLE TRAYS

CABLE TRUNKING

CABLE LADDERS



**ALBADI TECHNICAL INDUSTRIES P.O BOX 70 PC.319 SAHAM,
SULTANATE OF OMAN**

INDEX

1)Introduction

2) Our Products

3)Albadi Group Of Company's

4) Cable Trays

Page 7-22

5)Cable Trucking

Page 23-31

6)Cable Ladders

Page 32-43

7) Accessories

Page 44-47

8) Services

Introduction

Al-Badi Technical Industries LLC was incorporated in Saham, Sultanate of Oman in 1988 with the aim of providing fabrication facilities in steel, Aluminum and wooden structures for construction of buildings for public and private companies & industries requiring medium and large buildings, complexes & workshops.

The industry belongs to Al Badi group of companies.

Since 1988

Be it Steel or Aluminum or Wooden Structures come and discover a world of quality and technological innovation. We at Al-Badi Technical Industries LLC, Saham, Sultanate of Oman, offer quality and value to architectural and structural applications.

OUR PRODUCTS

Structural Steel Works

- Roofing with panels
- Roofing with profile sheets
- Roofing with sandwiched sheets
- Shaded Car parks
- Warehouses and Stores
- Showrooms
- Sheds

Non Structural Steel Work

- Handrails
- Shelves
- Balustrades
- Bollards
- Chequer plates
- Gratings
- Cat Ladder
- Spiral Staircases
- Chain Link Fencing
- HVAC Ducts
- Cable Trays & Cable Ladder
- Cable Trunking

Joinery Works

- Security Grills
- Steel Doors
- Sliding Doors
- Steel Gates
- Steel Windows
- Window Security Grills

Tools & Equipment

- Props(Jacks)
- Scaffoldings
- Trusses
- Silos
- Pressure Vessels
- Air Condition Ducting
- Trailer Chassis
- Profile Cutting

Wooden Doors:

- Paneled Doors
- Flush Core Doors
- Islamic Design Doors
- Glass Paneled Doors
- Meranti Wood Doors
- Mahogany Wood Doors
- Teak Wood Doors
- MDF Doors
- Veneer teak plywood doors

Fire Rated Doors

- 30 Minutes
- 60 Minutes
- 90 Minutes
- 120 Minutes

Aluminum Doors

- Sliding Doors
- Hinged Doors
- Automatic Opening Doors
- With Kick plates
- With HPL Sheet
- With Corrugated panels
- With sandwiched glasses
- With tinted / Clear glasses
- With toughened glasses
- With reflective glasses
- With decorative glasses

Wood & Alum. Windows

- Hinged Types
- Sliding Types
- Fixed Types
- Communication Type
- With sandwiched glasses
- With tinted glasses
- With clear glasses
- With toughened glasses
- With Reflective glasses
- With decorative glasses
- With double and triple glazing
- With obscured glasses

Interior Finishes

- Suspended Ceiling
- Partition Walls
- Sealing Benches

Pantry/Kitchen Units

Furniture

- Reception Counters
- Shop Counters
- Cupboards
- Tables
- Racks

Albadi Investment Holding Group
LLC is a Conglomerate of,



Al Badi Trading & Contracting Est.



Al Badi Technical Industries LLC



Asas Civil Contracting LLC



Al Sawadir Trading & Import LLC



Gulf International LLC



Jilfah Trading & Services Associated LLC



Kawas Engineering LLC

Cable Tray and Trunking....

In the electrical wiring of buildings, a cable tray system is used to support insulated electric cables used for power distribution and communication. Cable trays are used as an alternative to open wiring or electrical conduit systems, and are commonly used for cable management in commercial and industrial construction. They are especially useful in situations where changes to a wiring system are anticipated, since new cables can be installed by laying them in the tray, instead of pulling them through a pipe

Materials used...

Common cable trays are made of galvanized steel, stainless steel, aluminum, or glass-fiber reinforced plastic. The material for a given application is chosen based on where it will be used. Galvanized tray may be made of pre-galvanized steel sheet fabricated into tray, or may be hot-dip galvanized after fabrication. When galvanized tray is cut to length in the field, usually the cut surface will be painted with a zinc-rich compound to protect the metal from corrosion

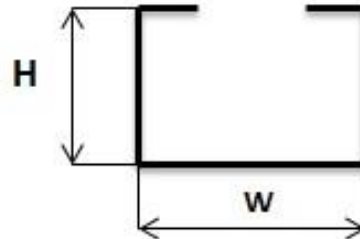
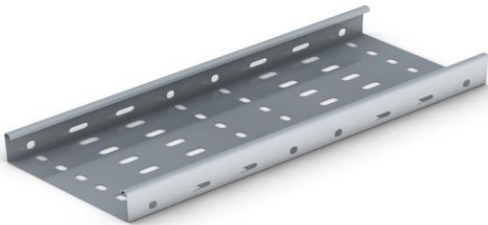
Cable Systems

- **Cable trays & Trunking systems are designed and fabricated by Albadi Technical Industries.**
- **Cable systems are Manufactured to a standard length of 3 mtrs.**
- **All cable tray fittings are available in wide range sizes.**
- **Trunking systems are provided with Screws/Knobs for quick installation.**
- **Finishes-Pre Galvanized, Painted and Powder coated Cable Systems.**
- **All sizes are offered based on requirement.**

STRAIGHT FLANGE PERFORATED CABLE TRAYS

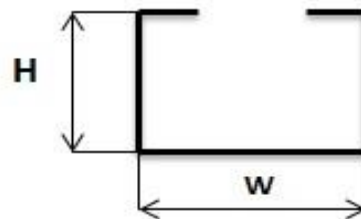
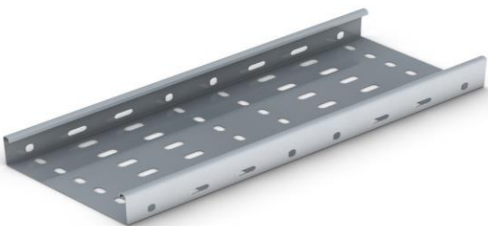
LIGHT

CODE NO	W	H	THK
ABTI-SF-50	50	12	0.9-1.2
ABTI-SF-75	75	12	0.9-1.2
ABTI-SF-100	100	12	0.9-1.2
ABTI-SF-150	150	12	1.0-1.5
ABTI-SF-225	225	12	1.0-1.5
ABTI-SF-300	300	20	1.0-1.5
ABTI-SF-450	450	20	1.2-2.0
ABTI-SF-600	600	20	1.2-2.0
ABTI-SF-750	750	20	1.5-2.0
ABTI-SF-900	900	20	1.5-2.0



HEAVY

CODE NO	W	H	THK
ABTI-SF-50	50	35	0.9-1.5
ABTI-SF-75	75	35	0.9-1.5
ABTI-SF-100	100	35	0.9-1.5
ABTI-SF-150	150	35	1.0-1.5
ABTI-SF-225	225	35	1.0-1.5
ABTI-SF-300	300	35	1.0-1.5
ABTI-SF-450	450	35	1.2-2.0
ABTI-SF-600	600	35	1.2-2.0
ABTI-SF-750	750	35	1.5-2.0
ABTI-SF-900	900	35	1.5-2.0

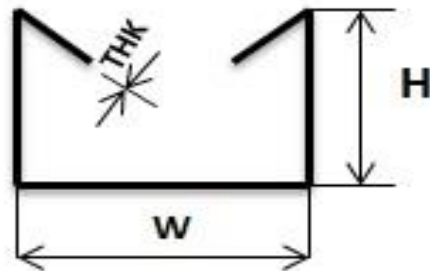


Thickness: 0.9,1.0,1.2,1.5,2.0mm

RETURN FLANGE PERFORATED CABLE TRAYS

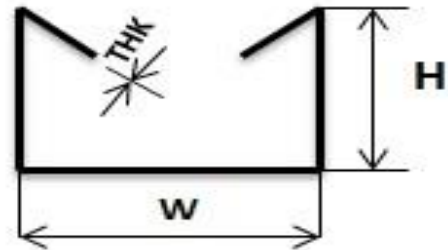
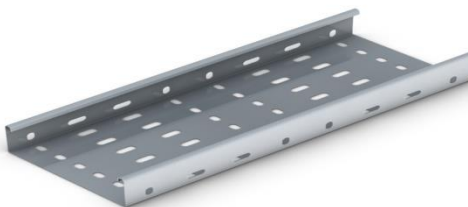
LIGHT

CODE NO	W	H	RF	THK
ABTI-RF-50	50	25	10	0.9-1.2
ABTI-RF-75	75	25	10	0.9-1.2
ABTI-RF-100	100	25	10	0.9-1.2
ABTI-RF-150	150	25	10	1.0-1.5
ABTI-RF-225	225	25	10	1.0-1.5
ABTI-RF-300	300	25	10	1.0-1.5
ABTI-RF-450	450	25	10	1.2-2.0
ABTI-RF-600	600	25	10	1.2-2.0
ABTI-RF-750	750	25	10	1.5-2.0
ABTI-RF-900	900	25	10	1.5-2.0



HEAVY

CODE NO	W	H	RF	THK
ABTI-RF-50	50	50	10	0.9-1.5
ABTI-RF-75	75	50	10	0.9-1.5
ABTI-RF-100	100	50	10	0.9-1.5
ABTI-RF-150	150	50	10	1.0-1.5
ABTI-RF-225	225	50	10	1.0-1.5
ABTI-RF-300	300	50	10	1.0-1.5
ABTI-RF-450	450	50	10	1.2-2.0
ABTI-RF-600	600	50	10	1.2-2.0
ABTI-RF-750	750	50	10	1.5-2.0
ABTI-RF-900	900	50	10	1.5-2.0



Thickness: 0.9,1.0,1.2,1.5,2.0mm

Note: Any Specific Size Can Also Be Offered.
All Dimensions Are In "Mm"
Thickness Is Based On Material Available.

STRAIGHT FLANGE 45° BEND

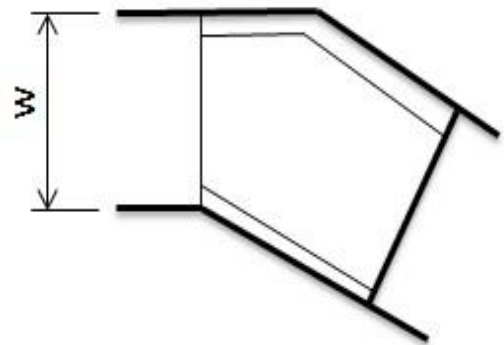
LIGHT

CODE NO	W	H	THK
ABTI-SF45°-50	50	12	0.9-1.2
ABTI-SF45°-75	75	12	0.9-1.2
ABTI-SF45°-100	100	12	0.9-1.2
ABTI-SF45°-150	150	12	1.0-1.5
ABTI-SF45°-225	225	12	1.0-1.5
ABTI-SF45°-300	300	20	1.0-1.5
ABTI-SF45°-450	450	20	1.2-2.0
ABTI-SF45°-600	600	20	1.2-2.0
ABTI-SF45°-750	750	20	1.5-2.0
ABTI-SF45°-900	900	20	1.5-2.0



HEAVY

CODE NO	W	H	THK
ABTI-SF45°-50	50	35	0.9-1.5
ABTI-SF45°-75	75	35	0.9-1.5
ABTI-SF45°-100	100	35	0.9-1.5
ABTI-SF45°-150	150	35	1.0-1.5
ABTI-SF45°-225	225	35	1.0-1.5
ABTI-SF45°-300	300	35	1.0-1.5
ABTI-SF45°-450	450	35	1.2-2.0
ABTI-SF45°-600	600	35	1.2-2.0
ABTI-SF45°-750	750	35	1.5-2.0
ABTI-SF45°-900	900	35	1.5-2.0



Thickness: 0.9.1.0.1.2.1.5.2.0mm

Note: Any Specific Size Can Also Be Offered.
All Dimensions Are In "Mm"
Thickness Is Based On Material Available.

RETURN FLANGE 45° BEND

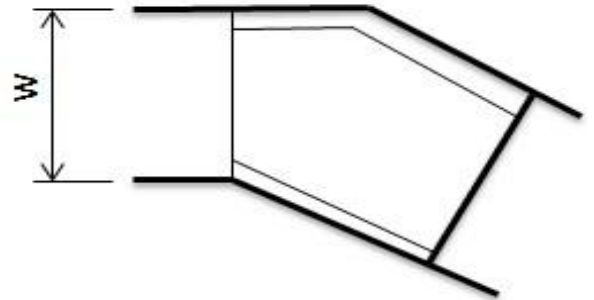
LIGHT

CODE NO	W	H	THK
ABTI-RF45°-50	50	25	0.9-1.2
ABTI-RF45°-75	75	25	0.9-1.2
ABTI-RF45°-100	100	25	0.9-1.2
ABTI-RF45°-150	150	25	1.0-1.5
ABTI-RF45°-225	225	25	1.0-1.5
ABTI-RF45°-300	300	25	1.0-1.5
ABTI-RF45°-450	450	25	1.2-2.0
ABTI-RF45°-600	600	25	1.2-2.0
ABTI-RF45°-750	750	25	1.5-2.0
ABTI-RF45°-900	900	25	1.5-2.0



HEAVY

CODE NO	W	H	THK
ABTI-RF45°-50	50	50	0.9-1.5
ABTI-RF45°-75	75	50	0.9-1.5
ABTI-RF45°-100	100	50	0.9-1.5
ABTI-RF45°-150	150	50	1.0-1.5
ABTI-RF45°-225	225	50	1.0-1.5
ABTI-RF45°-300	300	50	1.0-1.5
ABTI-RF45°-450	450	50	1.2-2.0
ABTI-RF45°-600	600	50	1.2-2.0
ABTI-RF45°-750	750	50	1.5-2.0
ABTI-RF45°-900	900	50	1.5-2.0



Thickness: 0.9.1.0.1.2.1.5.2.0mm

Note: Any Specific Size Can Also Be Offered.
All Dimensions Are In "Mm"
Thickness Is Based On Material Available.

STRAIGHT FLANGE 90° BEND

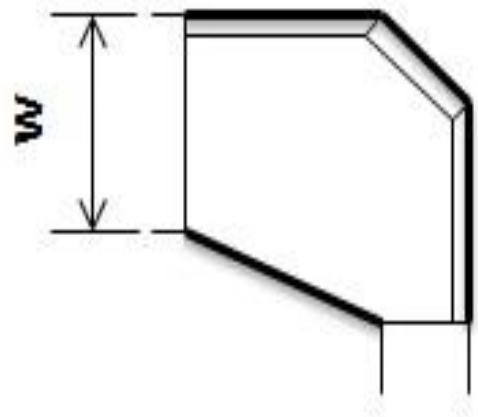
LIGHT

CODE NO	W	H	THK
ABTI-SF90°-50	50	12	0.9-1.2
ABTI-SF90°-75	75	12	0.9-1.2
ABTI-SF90°-100	100	12	0.9-1.2
ABTI-SF90°-150	150	12	1.0-1.5
ABTI-SF90°-225	225	12	1.0-1.5
ABTI-SF90°-300	300	20	1.0-1.5
ABTI-SF90°-450	450	20	1.2-2.0
ABTI-SF90°-600	600	20	1.2-2.0
ABTI-SF90°-750	750	20	1.5-2.0
ABTI-SF90°-900	900	20	1.5-2.0



HEAVY

CODE NO	W	H	THK
ABTI-SF90°-50	50	35	0.9-1.5
ABTI-SF90°-75	75	35	0.9-1.5
ABTI-SF90°-100	100	35	0.9-1.5
ABTI-SF90°-150	150	35	1.0-1.5
ABTI-SF90°-225	225	35	1.0-1.5
ABTI-SF90°-300	300	35	1.0-1.5
ABTI-SF90°-450	450	35	1.2-2.0
ABTI-SF90°-600	600	35	1.2-2.0
ABTI-SF90°-750	750	35	1.5-2.0
ABTI-SF90°-900	900	35	1.5-2.0



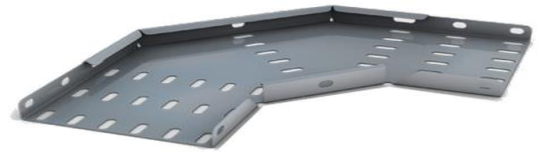
Thickness: 0.9.1.0.1.2.1.5.2.0mm

Note: Any Specific Size Can Also Be Offered.
All Dimensions Are In "Mm"
Thickness Is Based On Material Available.

RETURN FLANGE 90° BEND

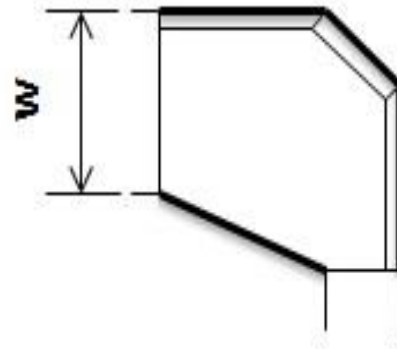
LIGHT

CODE NO	W	H	THK
ABTI-RF90°-50	50	25	0.9-1.2
ABTI-RF90°-75	75	25	0.9-1.2
ABTI-RF90°-100	100	25	0.9-1.2
ABTI-RF90°-150	150	25	1.0-1.5
ABTI-RF90°-225	225	25	1.0-1.5
ABTI-RF90°-300	300	25	1.0-1.5
ABTI-RF90°-450	450	25	1.2-2.0
ABTI-RF90°-600	600	25	1.2-2.0
ABTI-RF90°-750	750	25	1.5-2.0
ABTI-RF90°-900	900	25	1.5-2.0



HEAVY

CODE NO	W	H	THK
ABTI-RF90°-50	50	50	0.9-1.5
ABTI-RF90°-75	75	50	0.9-1.5
ABTI-RF90°-100	100	50	0.9-1.5
ABTI-RF90°-150	150	50	1.0-1.5
ABTI-RF90°-225	225	50	1.0-1.5
ABTI-RF90°-300	300	50	1.0-1.5
ABTI-RF90°-450	450	50	1.2-2.0
ABTI-RF90°-600	600	50	1.2-2.0
ABTI-RF90°-750	750	50	1.5-2.0
ABTI-RF90°-900	900	50	1.5-2.0



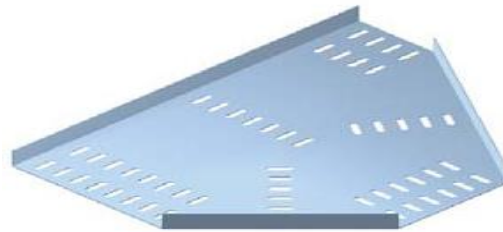
Thickness: 0.9,1.0,1.2,1.5,2.0mm

Note: Any Specific Size Can Also Be Offered.
All Dimensions Are In "Mm"
Thickness Is Based On Material Available.

STRAIGHT FLANGE EQUAL TEE

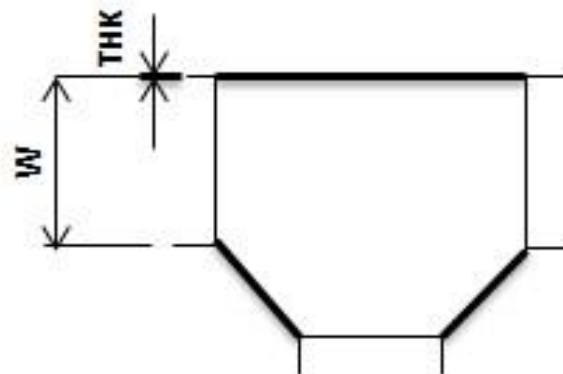
LIGHT

CODE NO	W	H	THK
ABTI-ET-50	50	12	0.9-1.2
ABTI-ET-75	75	12	0.9-1.2
ABTI-ET-100	100	12	0.9-1.2
ABTI-ET-150	150	12	1.0-1.5
ABTI-ET-225	225	12	1.0-1.5
ABTI-ET-300	300	20	1.0-1.5
ABTI-ET-450	450	20	1.2-2.0
ABTI-ET-600	600	20	1.2-2.0
ABTI-ET-750	750	20	1.5-2.0
ABTI-ET-900	900	20	1.5-2.0



HEAVY

CODE NO	W	H	THK
ABTI-ET-50	50	35	0.9-1.5
ABTI-ET-75	75	35	0.9-1.5
ABTI-ET-100	100	35	0.9-1.5
ABTI-ET-150	150	35	1.0-1.5
ABTI-ET-225	225	35	1.0-1.5
ABTI-ET-300	300	35	1.0-1.5
ABTI-ET-450	450	35	1.2-2.0
ABTI-ET-600	600	35	1.2-2.0
ABTI-ET-750	750	35	1.5-2.0
ABTI-ET-900	900	35	1.5-2.0



Thickness: 0.9,1.0,1.2,1.5,2.0mm

Note: Any Specific Size Can Also Be Offered.
All Dimensions Are In "Mm"
Thickness Is Based On Material Available.

RETURN FLANGE EQUAL TEE

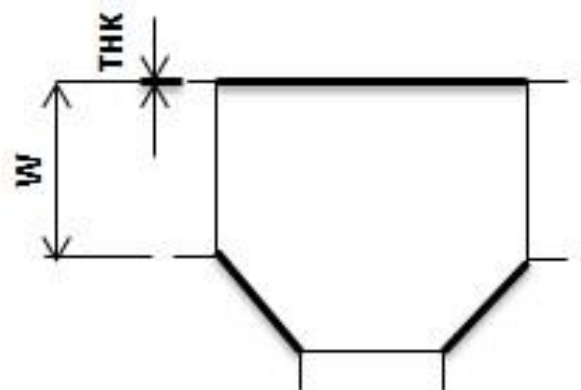
LIGHT

CODE NO	W	H	THK
ABTI-ET-50	50	25	0.9-1.2
ABTI-ET-75	75	25	0.9-1.2
ABTI-ET-100	100	25	0.9-1.2
ABTI-ET-150	150	25	1.0-1.5
ABTI-ET-225	225	25	1.0-1.5
ABTI-ET-300	300	25	1.0-1.5
ABTI-ET-450	450	25	1.2-2.0
ABTI-ET-600	600	25	1.2-2.0
ABTI-ET-750	750	25	1.5-2.0
ABTI-ET-900	900	25	1.5-2.0



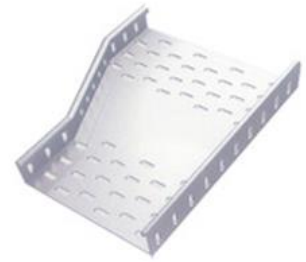
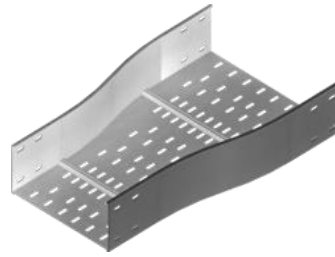
HEAVY

CODE NO	W	H	THK
ABTI-ET-50	50	50	0.9-1.5
ABTI-ET-75	75	50	0.9-1.5
ABTI-ET-100	100	50	0.9-1.5
ABTI-ET-150	150	50	1.0-1.5
ABTI-ET-225	225	50	1.0-1.5
ABTI-ET-300	300	50	1.0-1.5
ABTI-ET-450	450	50	1.2-2.0
ABTI-ET-600	600	50	1.2-2.0
ABTI-ET-750	750	50	1.5-2.0
ABTI-ET-900	900	50	1.5-2.0



Note: Any Specific Size Can Also Be Offered.
All Dimensions Are In "Mm"
Thickness Is Based On Material Available.

FLANGE REDUCERS



LIGHT

STRAIGHT FLANGE

RETURN FLANGE

CODE NO	W	H	THK
ABTI-SFR-100x50	100x50	12	0.9-2.0
ABTI-SFR-150x50	150x50	12	0.9-2.0
ABTI-SFR-225x50	225x50	12	1-2.0
ABTI-SFR-300x50	300x50	20	1-2.0
ABTI-SFR-450x50	450x50	20	1-2.0
ABTI-SFR-600x50	600x50	20	1-2.0
ABTI-SFR-750x50	750x50	20	1-2.0
ABTI-SFR-900x50	900x50	20	1-2.0
ABTI-SFR-150x100	150x100	12	1-2.0
ABTI-SFR-225x100	225x100	12	1-2.0
ABTI-SFR-300x100	300x100	20	1-2.0
ABTI-SFR-450x100	450x100	20	1-2.0
ABTI-SFR-600x100	600x100	20	1-2.0
ABTI-SFR-750x100	750x100	20	1-2.0
ABTI-SFR-900x100	900x100	20	1-2.0
ABTI-SFR-225x150	225x150	12	1-2.0
ABTI-SFR-300x150	300x150	20	1-2.0
ABTI-SFR-450x150	450x150	20	1-2.0
ABTI-SFR-600x150	600x150	20	1-2.0
ABTI-SFR-750x150	750x150	20	1-2.0
ABTI-SFR-900x150	900x150	20	1-2.0
ABTI-SFR-300x225	300x225	20	1-2.0
ABTI-SFR-450x225	450x225	20	1.2-2.0
ABTI-SFR-600x225	600x225	20	1.2-2.0
ABTI-SFR-750x225	750x225	20	1.2-2.0
ABTI-SFR-900x225	900x225	20	1.2-2.0
ABTI-SFR-450x300	450x300	20	1.2-2.0
ABTI-SFR-600x300	600x300	20	1.2-2.0
ABTI-SFR-750x300	750x300	20	1.2-2.0
ABTI-SFR-900x300	900x300	20	1.5-2.0
ABTI-SFR-600x450	600x450	20	1.5-2.0
ABTI-SFR-750x450	750x450	20	1.5-2.0
ABTI-SFR-900x450	900x450	20	1.5-2.0
ABTI-SFR-900x600	900x600	20	1.5-2.0
ABTI-SFR-750x600	750x600	20	1.5-2.0
ABTI-SFR-900x750	900x750	20	1.5-2.0

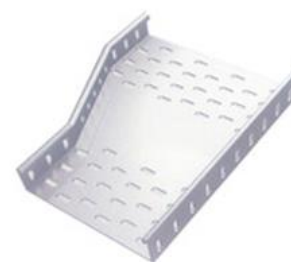
CODE NO	W	H	THK
ABTI-RFR-100x50	100x50	25	0.9-2.0
ABTI-RFR-150x50	150x50	25	0.9-2.0
ABTI-RFR-225x50	225x50	25	1-2.0
ABTI-RFR-300x50	300x50	25	1-2.0
ABTI-RFR-450x50	450x50	25	1-2.0
ABTI-RFR-600x50	600x50	25	1-2.0
ABTI-RFR-750x50	750x50	25	1-2.0
ABTI-RFR-900x50	900x50	25	1-2.0
ABTI-RFR-150x100	150x100	25	1-2.0
ABTI-RFR-225x100	225x100	25	1-2.0
ABTI-RFR-300x100	300x100	25	1-2.0
ABTI-RFR-450x100	450x100	25	1-2.0
ABTI-RFR-600x100	600x100	25	1-2.0
ABTI-RFR-750x100	750x100	25	1-2.0
ABTI-RFR-900x100	900x100	25	1-2.0
ABTI-RFR-225x150	225x150	25	1-2.0
ABTI-RFR-300x150	300x150	25	1-2.0
ABTI-RFR-450x150	450x150	25	1-2.0
ABTI-RFR-600x150	600x150	25	1-2.0
ABTI-RFR-750x150	750x150	25	1-2.0
ABTI-RFR-900x150	900x150	25	1-2.0
ABTI-RFR-300x225	300x225	25	1-2.0
ABTI-RFR-450x225	450x225	25	1.2-2.0
ABTI-RFR-600x225	600x225	25	1.2-2.0
ABTI-RFR-750x225	750x225	25	1.2-2.0
ABTI-RFR-900x225	900x225	25	1.2-2.0
ABTI-RFR-450x300	450x300	25	1.2-2.0
ABTI-RFR-600x300	600x300	25	1.2-2.0
ABTI-RFR-750x300	750x300	25	1.2-2.0
ABTI-RFR-900x300	900x300	25	1.5-2.0
ABTI-RFR-600x450	600x450	25	1.5-2.0
ABTI-RFR-750x450	750x450	25	1.5-2.0
ABTI-RFR-900x450	900x450	25	1.5-2.0
ABTI-RFR-900x600	900x600	25	1.5-2.0
ABTI-RFR-750x600	750x600	25	1.5-2.0
ABTI-RFR-900x750	900x750	25	1.5-2.0

Thickness: 0.9,1.0,1.2,1.5,2.0mm

Note: Any Specific Size Can Also Be Offered.
All Dimensions Are In "Mm"
Thickness Is Based On Material Available.



FLANGE REDUCERS



HEAVY

STRAIGHT FLANGE

RETURN FLANGE

CODE NO	W	H	THK
ABTI-FR-100x50	100x50	35	0.9-2.0
ABTI-FR-150x50	150x50	35	0.9-2.0
ABTI-FR-225x50	225x50	35	1-2.0
ABTI-FR-300x50	300x50	35	1-2.0
ABTI-FR-450x50	450x50	35	1-2.0
ABTI-FR-600x50	600x50	35	1-2.0
ABTI-FR-750x50	750x50	35	1-2.0
ABTI-FR-900x50	900x50	35	1-2.0
ABTI-FR-150x100	150x100	35	1-2.0
ABTI-FR-225x100	225x100	35	1-2.0
ABTI-FR-300x100	300x100	35	1-2.0
ABTI-FR-450x100	450x100	35	1-2.0
ABTI-FR-600x100	600x100	35	1-2.0
ABTI-FR-750x100	750x100	35	1-2.0
ABTI-FR-900x100	900x100	35	1-2.0
ABTI-FR-225x150	225x150	35	1-2.0
ABTI-FR-300x150	300x150	35	1-2.0
ABTI-FR-450x150	450x150	35	1-2.0
ABTI-FR-600x150	600x150	35	1-2.0
ABTI-FR-750x150	750x150	35	1-2.0
ABTI-FR-900x150	900x150	35	1-2.0
ABTI-FR-300x225	300x225	35	1-2.0
ABTI-FR-450x225	450x225	35	1.2-2.0
ABTI-FR-600x225	600x225	35	1.2-2.0
ABTI-FR-750x225	750x225	35	1.2-2.0
ABTI-FR-900x225	900x225	35	1.2-2.0
ABTI-FR-450x300	450x300	35	1.2-2.0
ABTI-FR-600x300	600x300	35	1.2-2.0
ABTI-FR-750x300	750x300	35	1.2-2.0
ABTI-FR-900x300	900x300	35	1.5-2.0
ABTI-FR-600x450	600x450	35	1.5-2.0
ABTI-FR-750x450	750x450	35	1.5-2.0
ABTI-FR-900x450	900x450	35	1.5-2.0
ABTI-FR-900x600	900x600	35	1.5-2.0
ABTI-FR-750x600	750x600	35	1.5-2.0
ABTI-FR-900x750	900x750	35	1.5-2.0

CODE NO	W	H	THK
ABTI-FR-100x50	100x50	50	0.9-2.0
ABTI-FR-150x50	150x50	50	0.9-2.0
ABTI-FR-225x50	225x50	50	1-2.0
ABTI-FR-300x50	300x50	50	1-2.0
ABTI-FR-450x50	450x50	50	1-2.0
ABTI-FR-600x50	600x50	50	1-2.0
ABTI-FR-750x50	750x50	50	1-2.0
ABTI-FR-900x50	900x50	50	1-2.0
ABTI-FR-150x100	150x100	50	1-2.0
ABTI-FR-225x100	225x100	50	1-2.0
ABTI-FR-300x100	300x100	50	1-2.0
ABTI-FR-450x100	450x100	50	1-2.0
ABTI-FR-600x100	600x100	50	1-2.0
ABTI-FR-750x100	750x100	50	1-2.0
ABTI-FR-900x100	900x100	50	1-2.0
ABTI-FR-225x150	225x150	50	1-2.0
ABTI-FR-300x150	300x150	50	1-2.0
ABTI-FR-450x150	450x150	50	1-2.0
ABTI-FR-600x150	600x150	50	1-2.0
ABTI-FR-750x150	750x150	50	1-2.0
ABTI-FR-900x150	900x150	50	1-2.0
ABTI-FR-300x225	300x225	50	1-2.0
ABTI-FR-450x225	450x225	50	1.2-2.0
ABTI-FR-600x225	600x225	50	1.2-2.0
ABTI-FR-750x225	750x225	50	1.2-2.0
ABTI-FR-900x225	900x225	50	1.2-2.0
ABTI-FR-450x300	450x300	50	1.2-2.0
ABTI-FR-600x300	600x300	50	1.2-2.0
ABTI-FR-750x300	750x300	50	1.2-2.0
ABTI-FR-900x300	900x300	50	1.5-2.0
ABTI-FR-600x450	600x450	50	1.5-2.0
ABTI-FR-750x450	750x450	50	1.5-2.0
ABTI-FR-900x450	900x450	50	1.5-2.0
ABTI-FR-900x600	900x600	50	1.5-2.0
ABTI-FR-750x600	750x600	50	1.5-2.0
ABTI-FR-900x750	900x750	50	1.5-2.0

Thickness: 0.9,1.0,1.2,1.5,2.0mm

Note: Any Specific Size Can Also Be Offered.
All Dimensions Are In "Mm"
Thickness Is Based On Material Available.

INSIDE RISER

LIGHT

STRAIGHT FLANGE

CODE NO	W	H	THK
ABTI-SF-IR-50	50	12	0.9-1.2
ABTI-SF-IR-75	75	12	0.9-1.2
ABTI-SF-IR-100	100	12	0.9-1.2
ABTI-SF-IR-150	150	12	1.0-1.5
ABTI-SF-IR-225	225	12	1.0-1.5
ABTI-SF-IR-300	300	20	1.0-1.5
ABTI-SF-IR-450	450	20	1.2-2.0
ABTI-SF-IR-600	600	20	1.2-2.0
ABTI-SF-IR-750	750	20	1.5-2.0
ABTI-SF-IR-900	900	20	1.5-2.0



RETURN FLANGE

CODE NO	W	H	RF	THK
ABTI-RF-IR-50	50	25	10	0.9-1.2
ABTI-RF-IR-75	75	25	10	0.9-1.2
ABTI-RF-IR-100	100	25	10	0.9-1.2
ABTI-RF-IR-150	150	25	10	1.0-1.5
ABTI-RF-IR-225	225	25	10	1.0-1.5
ABTI-RF-IR-300	300	25	10	1.0-1.5
ABTI-RF-IR-450	450	25	10	1.2-2.0
ABTI-RF-IR-600	600	25	10	1.2-2.0
ABTI-RF-IR-750	750	25	10	1.5-2.0
ABTI-RF-IR-900	900	25	10	1.5-2.0



HEAVY

CODE NO	W	H	THK
ABTI-SF-IR-50	50	35	0.9-1.2
ABTI-SF-IR-75	75	35	0.9-1.2
ABTI-SF-IR-100	100	35	0.9-1.2
ABTI-SF-IR-150	150	35	1.0-1.5
ABTI-SF-IR-225	225	35	1.0-1.5
ABTI-SF-IR-300	300	35	1.0-1.5
ABTI-SF-IR-450	450	35	1.2-2.0
ABTI-SF-IR-600	600	35	1.2-2.0
ABTI-SF-IR-750	750	35	1.5-2.0
ABTI-SF-IR-900	900	35	1.5-2.0

CODE NO	W	H	RF	THK
ABTI-RF-IR-50	50	50	10	0.9-1.5
ABTI-RF-IR-75	75	50	10	0.9-1.5
ABTI-RF-IR-100	100	50	10	0.9-1.5
ABTI-RF-IR-150	150	50	10	1.0-1.5
ABTI-RF-IR-225	225	50	10	1.0-1.5
ABTI-RF-IR-300	300	50	10	1.0-1.5
ABTI-RF-IR-450	450	50	10	1.2-2.0
ABTI-RF-IR-600	600	50	10	1.2-2.0
ABTI-RF-IR-750	750	50	10	1.5-2.0
ABTI-RF-IR-900	900	50	10	1.5-2.0

Thickiess:0.9,1.0,1.2,1.5,2.0mm

Note: Any Specific Size Can Also Be Offered.
All Dimensions Are In "Mm"
Thickness Is Based On Material Available.

STRAIGHT FLANGE OUTSIDE RISER

LIGHT

STRAIGHT FLANGE

CODE NO	W	H	THK
ABTI-SF-OR-50	50	12	0.9-1.2
ABTI-SF-OR-75	75	12	0.9-1.2
ABTI-SF-OR-100	100	12	0.9-1.2
ABTI-SF-OR-150	150	12	1.0-1.5
ABTI-SF-OR-225	225	12	1.0-1.5
ABTI-SF-OR-300	300	20	1.0-1.5
ABTI-SF-OR-450	450	20	1.2-2.0
ABTI-SF-OR-600	600	20	1.2-2.0
ABTI-SF-OR-750	750	20	1.5-2.0
ABTI-SF-OR-900	900	20	1.5-2.0



RETURN FLANGE

CODE NO	W	H	RF	THK
ABTI-RF-OR-50	50	25	10	0.9-1.2
ABTI-RF-OR-75	75	25	10	0.9-1.2
ABTI-RF-OR-100	100	25	10	0.9-1.2
ABTI-RF-OR-150	150	25	10	1.0-1.5
ABTI-RF-OR-225	225	25	10	1.0-1.5
ABTI-RF-OR-300	300	25	10	1.0-1.5
ABTI-RF-OR-450	450	25	10	1.2-2.0
ABTI-RF-OR-600	600	25	10	1.2-2.0
ABTI-RF-OR-750	750	25	10	1.5-2.0
ABTI-RF-OR-900	900	25	10	1.5-2.0



HEAVY

CODE NO	W	H	THK
ABTI-SF-OR-50	50	35	0.9-1.2
ABTI-SF-OR-75	75	35	0.9-1.2
ABTI-SF-OR-100	100	35	0.9-1.2
ABTI-SF-OR-150	150	35	1.0-1.5
ABTI-SF-OR-225	225	35	1.0-1.5
ABTI-SF-OR-300	300	35	1.0-1.5
ABTI-SF-OR-450	450	35	1.2-2.0
ABTI-SF-OR-600	600	35	1.2-2.0
ABTI-SF-OR-750	750	35	1.5-2.0
ABTI-SF-OR-900	900	35	1.5-2.0

CODE NO	W	H	RF	THK
ABTI-RF-OR-50	50	50	10	0.9-1.5
ABTI-RF-OR-75	75	50	10	0.9-1.5
ABTI-RF-OR-100	100	50	10	0.9-1.5
ABTI-RF-OR-150	150	50	10	1.0-1.5
ABTI-RF-OR-225	225	50	10	1.0-1.5
ABTI-RF-OR-300	300	50	10	1.0-1.5
ABTI-RF-OR-450	450	50	10	1.2-2.0
ABTI-RF-OR-600	600	50	10	1.2-2.0
ABTI-RF-OR-750	750	50	10	1.5-2.0
ABTI-RF-OR-900	900	50	10	1.5-2.0

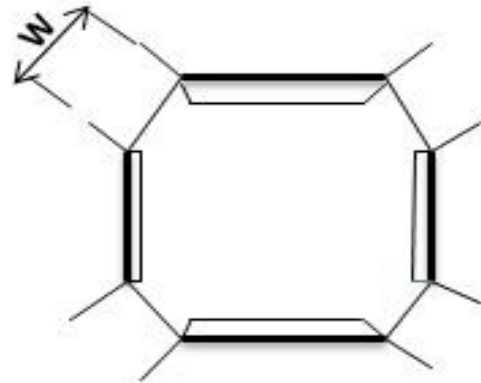
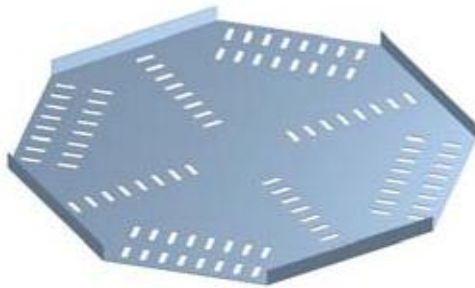
Thickness: 0.9,1.0,1.2,1.5,2.0mm

Note: Any Specific Size Can Also Be Offered.
All Dimensions Are In "Mm"
Thickness Is Based On Material Available.

STRAIGHT FLANGE CROSS

LIGHT

CODE NO	W	H	THK
ABTI-SC-50	50	12	0.9-1.2
ABTI-SC-75	75	12	0.9-1.2
ABTI-SC-100	100	12	0.9-1.2
ABTI-SC-150	150	12	1.0-1.5
ABTI-SC-225	225	12	1.0-1.5
ABTI-SC-300	300	20	1.0-1.5
ABTI-SC-450	450	20	1.2-2.0
ABTI-SC-600	600	20	1.2-2.0
ABTI-SC-750	750	20	1.5-2.0
ABTI-SC-900	900	20	1.5-2.0



HEAVY

CODE NO	W	H	THK
ABTI-SC-50	50	35	0.9-1.5
ABTI-SC-75	75	35	0.9-1.5
ABTI-SC-100	100	35	0.9-1.5
ABTI-SC-150	150	35	1.0-1.5
ABTI-SC-225	225	35	1.0-1.5
ABTI-SC-300	300	35	1.0-1.5
ABTI-SC-450	450	35	1.2-2.0
ABTI-SC-600	600	35	1.2-2.0
ABTI-SC-750	750	35	1.5-2.0
ABTI-SC-900	900	35	1.5-2.0

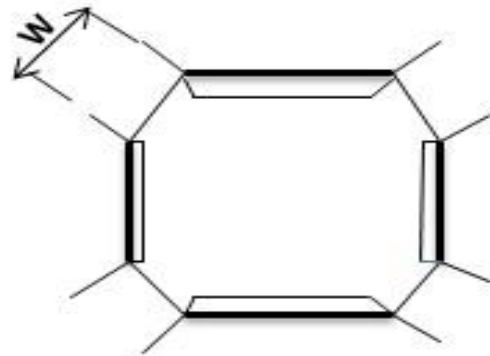
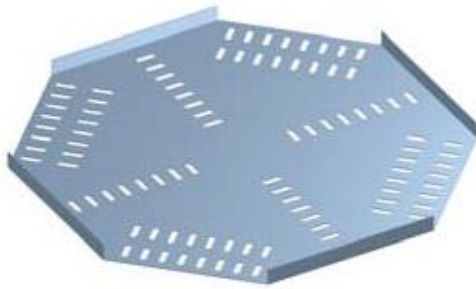
Thickness: 0.9.1.0.1.2.1.5.2.0mm

Note: Any Specific Size Can Also Be Offered.
All Dimensions Are In "Mm"
Thickness Is Based On Material Available.

RETURN FLANGE CROSS

LIGHT

CODE NO	W	H	THK
ABTI-RC-50	50	25	0.9-1.2
ABTI-RC-75	75	25	0.9-1.2
ABTI-RC-100	100	25	0.9-1.2
ABTI-RC-150	150	25	1.0-1.5
ABTI-RC-225	225	25	1.0-1.5
ABTI-RC-300	300	25	1.0-1.5
ABTI-RC-450	450	25	1.2-2.0
ABTI-RC-600	600	25	1.2-2.0
ABTI-RC-750	750	25	1.5-2.0
ABTI-RC-900	900	25	1.5-2.0



HEAVY

CODE NO	W	H	THK
ABTI-RC-50	50	50	0.9-1.5
ABTI-RC-75	75	50	0.9-1.5
ABTI-RC-100	100	50	0.9-1.5
ABTI-RC-150	150	50	1.0-1.5
ABTI-RC-225	225	50	1.0-1.5
ABTI-RC-300	300	50	1.0-1.5
ABTI-RC-450	450	50	1.2-2.0
ABTI-RC-600	600	50	1.2-2.0
ABTI-RC-750	750	50	1.5-2.0
ABTI-RC-900	900	50	1.5-2.0

Thickness: 0.9,1.0,1.2,1.5,2.0mm

Note: Any Specific Size Can Also Be Offered.
All Dimensions Are In "Mm"
Thickness Is Based On Material Available.

COVERS FOR CABLE TRAY

PLAIN TYPE

CODE NO	W	THK
ABTI-CT-50	50	0.9-1.5
ABTI-CT-75	75	0.9-1.5
ABTI-CT-100	100	0.9-1.5
ABTI-CT-150	150	1.0-1.5
ABTI-CT-225	225	1.0-1.5
ABTI-CT-300	300	1.0-1.5
ABTI-CT-450	450	1.2-2.0
ABTI-CT-600	600	1.2-2.0
ABTI-CT-750	750	1.5-2.0
ABTI-CT-900	900	1.5-2.0

VENTILATED TYPE

CODE NO	W	THK
ABTI-CT-50	50	0.9-1.5
ABTI-CT-75	75	0.9-1.5
ABTI-CT-100	100	0.9-1.5
ABTI-CT-150	150	1.0-1.5
ABTI-CT-225	225	1.0-1.5
ABTI-CT-300	300	1.0-1.5
ABTI-CT-450	450	1.2-2.0
ABTI-CT-600	600	1.2-2.0
ABTI-CT-750	750	1.5-2.0
ABTI-CT-900	900	1.5-2.0



Thickness: 0.9,1.0,1.2,1.5,2.0mm

Note: Any Specific Size Can Also Be Offered.
All Dimensions Are In "Mm"
Thickness Is Based On Material Available.

CABLE TRUNKING

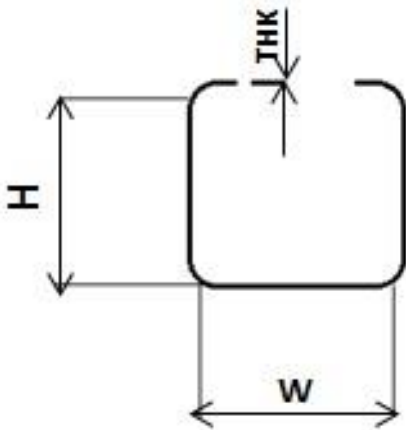
Note: Any Specific Size Can Also Be Offered.
All Dimensions Are In "Mm"
Thickness Is Based On Material Available.

TRUNKING SCREW TRAY

CODE NO	W	THK
TST-100x50	100x50	1.0-1.2
TST-150x50	150x50	0.9-1.0
TST-225x50	225x50	1.0-1.2
TST-300x50	300x50	1.2-1.5
TST-75x75	75x75	0.7-1.0
TST-100x75	100x75	0.9-1.2
TST-150x75	150x75	0.9-1.0
TST-225x75	225x75	1.0-1.2
TST-300x75	300x75	1.2-1.5
TST-100x100	100x100	0.9-1.2
TST-150x100	150x100	0.9-1.2
TST-225x100	225x100	1.0-1.2
TST-300x100	300x100	1.2-1.5
TST-150x150	150x150	0.9-1.2
TST-225x150	225x150	1.0-1.2
TST-300x150	300x150	1.2-1.5
TST-225x225	225x225	1.0-1.2

CODE NO	W	THK
TSD-100x50	100x50	1.0-1.2
TSD-150x50	150x50	0.9-1.0
TSD-225x50	225x50	1.0-1.2
TSD-300x50	300x50	1.2-1.5
TSD-75x75	75x75	0.7-1.0
TSD-100x75	100x75	0.9-1.2
TSD-150x75	150x75	0.9-1.0
TSD-225x75	225x75	1.0-1.2
TSD-300x75	300x75	1.2-1.5
TSD-100x100	100x100	0.9-1.2
TSD-150x100	150x100	0.9-1.2
TSD-225x100	225x100	1.0-1.2
TSD-300x100	300x100	1.2-1.5
TSD-150x150	150x150	0.9-1.2
TSD-225x150	225x150	1.0-1.2
TSD-300x150	300x150	1.2-1.5
TSD-225x225	225x225	1.0-1.2

CODE NO	W	THK
TSS-50x50	50x50	0.7-1.0
TSS-75x50	75x50	0.7-1.0
TSS-100x50	100x50	0.9-1.2
TSS-150x50	150x50	0.9-1.0
TSS-225x50	225x50	1.0-1.2
TSS-300x50	300x50	1.2-1.5
TSS-75x75	75x75	0.7-1.0
TSS-100x75	100x75	0.9-1.2
TSS-150x75	150x75	0.9-1.0
TSS-225x75	225x75	1.0-1.2
TSS-300x75	300x75	1.2-1.5
TSS-100x100	100x100	0.9-1.2
TSS-150x100	150x100	0.9-1.2
TSS-225x100	225x100	1.0-1.2
TSS-300x100	300x100	1.2-1.5
TSS-150x150	150x150	0.9-1.2
TSS-225x150	225x150	1.0-1.2
TSS-300x150	300x150	1.2-1.5
TSS-225x225	225x225	1.0-1.2



Thickiess:0.7.0.9.1.0.1.2.1.5mm

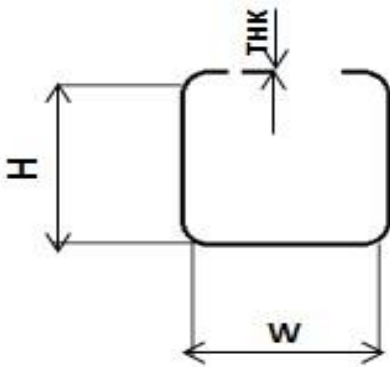
Note: Any Specific Size Can Also Be Offered.
All Dimensions Are In "Mm"
Thickness Is Based On Material Available.

TRUNKING KNOB TRAY

CODE NO	W	THK
TKT-100x50	100x50	1.0-1.2
TKT-150x50	150x50	0.9-1.0
TKT-225x50	225x50	1.0-1.2
TKT-300x50	300x50	1.2-1.5
TKT-75x75	75x75	0.7-1.0
TKT-100x75	100x75	0.9-1.2
TKT-150x75	150x75	0.9-1.0
TKT-225x75	225x75	1.0-1.2
TKT-300x75	300x75	1.2-1.5
TKT-100x100	100x100	0.9-1.2
TKT-150x100	150x100	0.9-1.2
TKT-225x100	225x100	1.0-1.2
TKT-300x100	300x100	1.2-1.5
TKT-150x150	150x150	0.9-1.2
TKT-225x150	225x150	1.0-1.2
TKT-300x150	300x150	1.2-1.5
TKT-225x225	225x225	1.0-1.2

CODE NO	W	THK
TKD-100x50	100x50	1.0-1.2
TKD-150x50	150x50	0.9-1.0
TKD-225x50	225x50	1.0-1.2
TKD-300x50	300x50	1.2-1.5
TKD-75x75	75x75	0.7-1.0
TKD-100x75	100x75	0.9-1.2
TKD-150x75	150x75	0.9-1.0
TKD-225x75	225x75	1.0-1.2
TKD-300x75	300x75	1.2-1.5
TKD-100x100	100x100	0.9-1.2
TKD-150x100	150x100	0.9-1.2
TKD-225x100	225x100	1.0-1.2
TKD-300x100	300x100	1.2-1.5
TKD-150x150	150x150	0.9-1.2
TKD-225x150	225x150	1.0-1.2
TKD-300x150	300x150	1.2-1.5
TKD-225x225	225x225	1.0-1.2

CODE NO	W	THK
TKS-50x50	50x50	0.7-1.0
TKS-75x50	75x50	0.7-1.0
TKS-100x50	100x50	0.9-1.2
TKS-150x50	150x50	0.9-1.0
TKS-225x50	225x50	1.0-1.2
TKS-300x50	300x50	1.2-1.5
TKS-75x75	75x75	0.7-1.0
TKS-100x75	100x75	0.9-1.2
TKS-150x75	150x75	0.9-1.0
TKS-225x75	225x75	1.0-1.2
TKS-300x75	300x75	1.2-1.5
TKS-100x100	100x100	0.9-1.2
TKS-150x100	150x100	0.9-1.2
TKS-225x100	225x100	1.0-1.2
TKS-300x100	300x100	1.2-1.5
TKS-150x150	150x150	0.9-1.2
TKS-225x150	225x150	1.0-1.2
TKS-300x150	300x150	1.2-1.5
TKS-225x225	225x225	1.0-1.2



Thickness:0.7.0.9.1.0.1.2.1.5mm

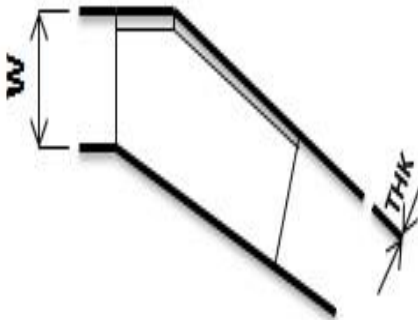
Note: Any Specific Size Can Also Be Offered.
All Dimensions Are In "Mm"
Thickness Is Based On Material Available.

45° BEND

CODE NO	W	THK
TT45°-100x50	100x50	1.0-1.2
TT45°-150x50	150x50	0.9-1.0
TT45°-225x50	225x50	1.0-1.2
TT45°-300x50	300x50	1.2-1.5
TT45°-75x75	75x75	0.7-1.0
TT45°-100x75	100x75	0.9-1.2
TT45°-150x75	150x75	0.9-1.0
TT45°-225x75	225x75	1.0-1.2
TT45°-300x75	300x75	1.2-1.5
TT45°-100x100	100x100	0.9-1.2
TT45°-150x100	150x100	0.9-1.2
TT45°-225x100	225x100	1.0-1.2
TT45°-300x100	300x100	1.2-1.5
TT45°-150x150	150x150	0.9-1.2
TT45°-225x150	225x150	1.0-1.2
TT45°-300x150	300x150	1.2-1.5
TT45°-225x225	225x225	1.0-1.2

CODE NO	W	THK
TD45°-100x50	100x50	1.0-1.2
TD45°-150x50	150x50	0.9-1.0
TD45°-225x50	225x50	1.0-1.2
TD45°-300x50	300x50	1.2-1.5
TD45°-75x75	75x75	0.7-1.0
TD45°-100x75	100x75	0.9-1.2
TD45°-150x75	150x75	0.9-1.0
TD45°-225x75	225x75	1.0-1.2
TD45°-300x75	300x75	1.2-1.5
TD45°-100x100	100x100	0.9-1.2
TD45°-150x100	150x100	0.9-1.2
TD45°-225x100	225x100	1.0-1.2
TD45°-300x100	300x100	1.2-1.5
TD45°-150x150	150x150	0.9-1.2
TD45°-225x150	225x150	1.0-1.2
TD45°-300x150	300x150	1.2-1.5
TD45°-225x225	225x225	1.0-1.2

CODE NO	W	THK
TS45°-50x50	50x50	0.7-1.0
TS45°-75x50	75x50	0.7-1.0
TS45°-100x50	100x50	0.9-1.2
TS45°-150x50	150x50	0.9-1.0
TS45°-225x50	225x50	1.0-1.2
TS45°-300x50	300x50	1.2-1.5
TS45°-75x75	75x75	0.7-1.0
TS45°-100x75	100x75	0.9-1.2
TS45°-150x75	150x75	0.9-1.0
TS45°-225x75	225x75	1.0-1.2
TS45°-300x75	300x75	1.2-1.5
TS45°-100x100	100x100	0.9-1.2
TS45°-150x100	150x100	0.9-1.2
TS45°-225x100	225x100	1.0-1.2
TS45°-300x100	300x100	1.2-1.5
TS45°-150x150	150x150	0.9-1.2
TS45°-225x150	225x150	1.0-1.2
TS45°-300x150	300x150	1.2-1.5
TS45°-225x225	225x225	1.0-1.2



Thickiess:0.7,0.9,1.0,1.2,1.5mm

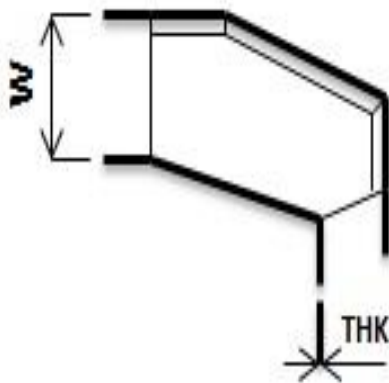
Note: Any Specific Size Can Also Be Offered.
All Dimensions Are In "Mm"
Thickness Is Based On Material Available.

90° BEND

CODE NO	W	THK
TT90°-100x50	100x50	1.0-1.2
TT90°-150x50	150x50	0.9-1.0
TT90°-225x50	225x50	1.0-1.2
TT90°-300x50	300x50	1.2-1.5
TT90°-75x75	75x75	0.7-1.0
TT90°-100x75	100x75	0.9-1.2
TT90°-150x75	150x75	0.9-1.0
TT90°-225x75	225x75	1.0-1.2
TT90°-300x75	300x75	1.2-1.5
TT90°-100x100	100x100	0.9-1.2
TT90°-150x100	150x100	0.9-1.2
TT90°-225x100	225x100	1.0-1.2
TT90°-300x100	300x100	1.2-1.5
TT90°-150x150	150x150	0.9-1.2
TT90°-225x150	225x150	1.0-1.2
TT90°-300x150	300x150	1.2-1.5
TT90°-225x225	225x225	1.0-1.2

CODE NO	W	THK
TD90°-100x50	100x50	1.0-1.2
TD90°-150x50	150x50	0.9-1.0
TD90°-225x50	225x50	1.0-1.2
TD90°-300x50	300x50	1.2-1.5
TD90°-75x75	75x75	0.7-1.0
TD90°-100x75	100x75	0.9-1.2
TD90°-150x75	150x75	0.9-1.0
TD90°-225x75	225x75	1.0-1.2
TD90°-300x75	300x75	1.2-1.5
TD90°-100x100	100x100	0.9-1.2
TD90°-150x100	150x100	0.9-1.2
TD90°-225x100	225x100	1.0-1.2
TD90°-300x100	300x100	1.2-1.5
TD90°-150x150	150x150	0.9-1.2
TD90°-225x150	225x150	1.0-1.2
TD90°-300x150	300x150	1.2-1.5
TD90°-225x225	225x225	1.0-1.2

CODE NO	W	THK
TS90°-50x50	50x50	0.7-1.0
TS90°-75x50	75x50	0.7-1.0
TS90°-100x50	100x50	0.9-1.2
TS90°-150x50	150x50	0.9-1.0
TS90°-225x50	225x50	1.0-1.2
TS90°-300x50	300x50	1.2-1.5
TS90°-75x75	75x75	0.7-1.0
TS90°-100x75	100x75	0.9-1.2
TS90°-150x75	150x75	0.9-1.0
TS90°-225x75	225x75	1.0-1.2
TS90°-300x75	300x75	1.2-1.5
TS90°-100x100	100x100	0.9-1.2
TS90°-150x100	150x100	0.9-1.2
TS90°-225x100	225x100	1.0-1.2
TS90°-300x100	300x100	1.2-1.5
TS90°-150x150	150x150	0.9-1.2
TS90°-225x150	225x150	1.0-1.2
TS90°-300x150	300x150	1.2-1.5
TS90°-225x225	225x225	1.0-1.2



Thickness: 0.7 0.9 1.0 1.2 1.5mm

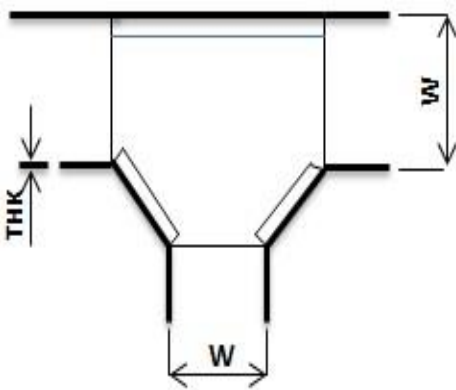
Note: Any Specific Size Can Also Be Offered.
All Dimensions Are In "Mm"
Thickness Is Based On Material Available.

TEE FOR TRUNKING

CODE NO	W	THK
TTEE-100×50	100×50	1.0-1.2
TTEE-150×50	150×50	0.9-1.0
TTEE-225×50	225×50	1.0-1.2
TTEE-300×50	300×50	1.2-1.5
TTEE-75×75	75×75	0.7-1.0
TTEE-100×75	100×75	0.9-1.2
TTEE-150×75	150×75	0.9-1.0
TTEE-225×75	225×75	1.0-1.2
TTEE-300×75	300×75	1.2-1.5
TTEE-100×100	100×100	0.9-1.2
TTEE-150×100	150×100	0.9-1.2
TTEE-225×100	225×100	1.0-1.2
TTEE-300×100	300×100	1.2-1.5
TTEE-150×150	150×150	0.9-1.2
TTEE-225×150	225×150	1.0-1.2
TTEE-300×150	300×150	1.2-1.5
TTEE-225×225	225×225	1.0-1.2

CODE NO	W	THK
TDEE-100×50	100×50	1.0-1.2
TDEE-150×50	150×50	0.9-1.0
TDEE-225×50	225×50	1.0-1.2
TDEE-300×50	300×50	1.2-1.5
TDEE-75×75	75×75	0.7-1.0
TDEE-100×75	100×75	0.9-1.2
TDEE-150×75	150×75	0.9-1.0
TDEE-225×75	225×75	1.0-1.2
TDEE-300×75	300×75	1.2-1.5
TDEE-100×100	100×100	0.9-1.2
TDEE-150×100	150×100	0.9-1.2
TDEE-225×100	225×100	1.0-1.2
TDEE-300×100	300×100	1.2-1.5
TDEE-150×150	150×150	0.9-1.2
TDEE-225×150	225×150	1.0-1.2
TDEE-300×150	300×150	1.2-1.5
TDEE-225×225	225×225	1.0-1.2

CODE NO	W	THK
TSEE-50×50	50×50	0.7-1.0
TSEE-75×50	75×50	0.7-1.0
TSEE-100×50	100×50	0.9-1.2
TSEE-150×50	150×50	0.9-1.0
TSEE-225×50	225×50	1.0-1.2
TSEE-300×50	300×50	1.2-1.5
TSEE-75×75	75×75	0.7-1.0
TSEE-100×75	100×75	0.9-1.2
TSEE-150×75	150×75	0.9-1.0
TSEE-225×75	225×75	1.0-1.2
TSEE-300×75	300×75	1.2-1.5
TSEE-100×100	100×100	0.9-1.2
TSEE-150×100	150×100	0.9-1.2
TSEE-225×100	225×100	1.0-1.2
TSEE-300×100	300×100	1.2-1.5
TSEE-150×150	150×150	0.9-1.2
TSEE-225×150	225×150	1.0-1.2
TSEE-300×150	300×150	1.2-1.5
TSEE-225×225	225×225	1.0-1.2



Thicknesses:0.7,0.9,1.0,1.2,1.5mm

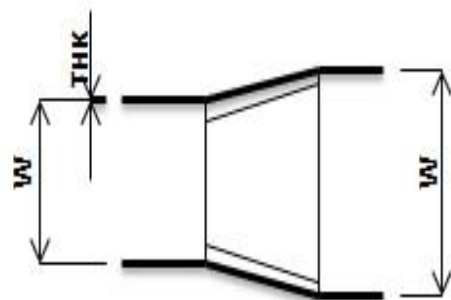
Note: Any Specific Size Can Also Be Offered.
All Dimensions Are In "Mm"
Thickness Is Based On Material Available.

REDUCER FOR TRUNKING

CODE NO	W	THK
TTR-100×50	100×50	1.0-1.2
TTR-150×50	150×50	0.9-1.0
TTR-225×50	225×50	1.0-1.2
TTR-300×50	300×50	1.2-1.5
TTR-75×75	75×75	0.7-1.0
TTR-100×75	100×75	0.9-1.2
TTR-150×75	150×75	0.9-1.0
TTR-225×75	225×75	1.0-1.2
TTR-300×75	300×75	1.2-1.5
TTR-100×100	100×100	0.9-1.2
TTR-150×100	150×100	0.9-1.2
TTR-225×100	225×100	1.0-1.2
TTR-300×100	300×100	1.2-1.5
TTR-150×150	150×150	0.9-1.2
TTR-225×150	225×150	1.0-1.2
TTR-300×150	300×150	1.2-1.5
TTR-225×225	225×225	1.0-1.2

CODE NO	W	THK
DTR-100×50	100×50	1.0-1.2
DTR-150×50	150×50	0.9-1.0
DTR-225×50	225×50	1.0-1.2
DTR-300×50	300×50	1.2-1.5
DTR-75×75	75×75	0.7-1.0
DTR-100×75	100×75	0.9-1.2
DTR-150×75	150×75	0.9-1.0
DTR-225×75	225×75	1.0-1.2
DTR-300×75	300×75	1.2-1.5
DTR-100×100	100×100	0.9-1.2
DTR-150×100	150×100	0.9-1.2
DTR-225×100	225×100	1.0-1.2
DTR-300×100	300×100	1.2-1.5
DTR-150×150	150×150	0.9-1.2
DTR-225×150	225×150	1.0-1.2
DTR-300×150	300×150	1.2-1.5
DTR-225×225	225×225	1.0-1.2

CODE NO	W	THK
STR-50×50	50×50	0.7-1.0
STR-75×50	75×50	0.7-1.0
STR-100×50	100×50	0.9-1.2
STR-150×50	150×50	0.9-1.0
STR-225×50	225×50	1.0-1.2
STR-300×50	300×50	1.2-1.5
STR-75×75	75×75	0.7-1.0
STR-100×75	100×75	0.9-1.2
STR-150×75	150×75	0.9-1.0
STR-225×75	225×75	1.0-1.2
STR-300×75	300×75	1.2-1.5
STR-100×100	100×100	0.9-1.2
STR-150×100	150×100	0.9-1.2
STR-225×100	225×100	1.0-1.2
STR-300×100	300×100	1.2-1.5
STR-150×150	150×150	0.9-1.2
STR-225×150	225×150	1.0-1.2
STR-300×150	300×150	1.2-1.5
STR-225×225	225×225	1.0-1.2



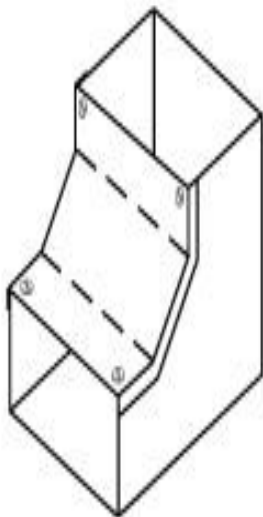
Thickiess:0.7,0.9,1.0,1.2,1.5mm

Note: Any Specific Size Can Also Be Offered.
All Dimensions Are In "Mm"
Thickness Is Based On Material Available.

INSIDE RISER FOR TRUNKING

CODE NO	W	THK
DIRT-100x50	100x50	1.0-1.2
DIRT-150x50	150x50	0.9-1.0
DIRT-225x50	225x50	1.0-1.2
DIRT-300x50	300x50	1.2-1.5
DIRT-75x75	75x75	0.7-1.0
DIRT-100x75	100x75	0.9-1.2
DIRT-150x75	150x75	0.9-1.0
DIRT-225x75	225x75	1.0-1.2
DIRT-300x75	300x75	1.2-1.5
DIRT-100x100	100x100	0.9-1.2
DIRT-150x100	150x100	0.9-1.2
DIRT-225x100	225x100	1.0-1.2
DIRT-300x100	300x100	1.2-1.5
DIRT-150x150	150x150	0.9-1.2
DIRT-225x150	225x150	1.0-1.2
DIRT-300x150	300x150	1.2-1.5
DIRT-225x225	225x225	1.0-1.2

CODE NO	W	THK
TIRT-100x50	100x50	1.0-1.2
TIRT-150x50	150x50	0.9-1.0
TIRT-225x50	225x50	1.0-1.2
TIRT-300x50	300x50	1.2-1.5
TIRT-75x75	75x75	0.7-1.0
TIRT-100x75	100x75	0.9-1.2
TIRT-150x75	150x75	0.9-1.0
TIRT-225x75	225x75	1.0-1.2
TIRT-300x75	300x75	1.2-1.5
TIRT-100x100	100x100	0.9-1.2
TIRT-150x100	150x100	0.9-1.2
TIRT-225x100	225x100	1.0-1.2
TIRT-300x100	300x100	1.2-1.5
TIRT-150x150	150x150	0.9-1.2
TIRT-225x150	225x150	1.0-1.2
TIRT-300x150	300x150	1.2-1.5
TIRT-225x225	225x225	1.0-1.2



CODE NO	W	THK
SIRT-50x50	50x50	0.7-1.0
SIRT-75x50	75x50	0.7-1.0
SIRT-100x50	100x50	0.9-1.2
SIRT-150x50	150x50	0.9-1.0
SIRT-225x50	225x50	1.0-1.2
SIRT-300x50	300x50	1.2-1.5
SIRT-75x75	75x75	0.7-1.0
SIRT-100x75	100x75	0.9-1.2
SIRT-150x75	150x75	0.9-1.0
SIRT-225x75	225x75	1.0-1.2
SIRT-300x75	300x75	1.2-1.5
SIRT-100x100	100x100	0.9-1.2
SIRT-150x100	150x100	0.9-1.2
SIRT-225x100	225x100	1.0-1.2
SIRT-300x100	300x100	1.2-1.5
SIRT-150x150	150x150	0.9-1.2
SIRT-225x150	225x150	1.0-1.2
SIRT-300x150	300x150	1.2-1.5
SIRT-225x225	225x225	1.0-1.2



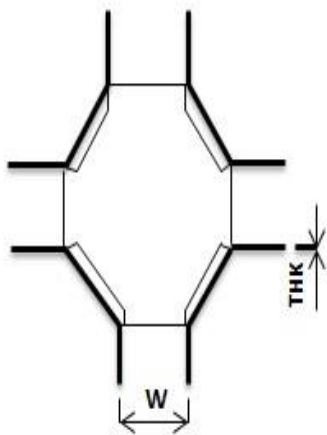
Thickness:0.7,0.9,1.0,1.2,1.5mm

Note: Any Specific Size Can Also Be Offered.
All Dimensions Are In "Mm"
Thickness Is Based On Material Available.

CROSS FOR TRUNKING

CODE NO	W	THK
TCT-100x50	100x50	1.0-1.2
TCT-150x50	150x50	0.9-1.0
TCT-225x50	225x50	1.0-1.2
TCT-300x50	300x50	1.2-1.5
TCT-75x75	75x75	0.7-1.0
TCT-100x75	100x75	0.9-1.2
TCT-150x75	150x75	0.9-1.0
TCT-225x75	225x75	1.0-1.2
TCT-300x75	300x75	1.2-1.5
TCT-100x100	100x100	0.9-1.2
TCT-150x100	150x100	0.9-1.2
TCT-225x100	225x100	1.0-1.2
TCT-300x100	300x100	1.2-1.5
TCT-150x150	150x150	0.9-1.2
TCT-225x150	225x150	1.0-1.2
TCT-300x150	300x150	1.2-1.5
TCT-225x225	225x225	1.0-1.2

CODE NO	W	THK
DCT-100x50	100x50	1.0-1.2
DCT-150x50	150x50	0.9-1.0
DCT-225x50	225x50	1.0-1.2
DCT-300x50	300x50	1.2-1.5
DCT-75x75	75x75	0.7-1.0
DCT-100x75	100x75	0.9-1.2
DCT-150x75	150x75	0.9-1.0
DCT-225x75	225x75	1.0-1.2
DCT-300x75	300x75	1.2-1.5
DCT-100x100	100x100	0.9-1.2
DCT-150x100	150x100	0.9-1.2
DCT-225x100	225x100	1.0-1.2
DCT-300x100	300x100	1.2-1.5
DCT-150x150	150x150	0.9-1.2
DCT-225x150	225x150	1.0-1.2
DCT-300x150	300x150	1.2-1.5
DCT-225x225	225x225	1.0-1.2



CODE NO	W	THK
SCT-50x50	50x50	0.7-1.0
SCT-75x50	75x50	0.7-1.0
SCT-100x50	100x50	0.9-1.2
SCT-150x50	150x50	0.9-1.0
SCT-225x50	225x50	1.0-1.2
SCT-300x50	300x50	1.2-1.5
SCT-75x75	75x75	0.7-1.0
SCT-100x75	100x75	0.9-1.2
SCT-150x75	150x75	0.9-1.0
SCT-225x75	225x75	1.0-1.2
SCT-300x75	300x75	1.2-1.5
SCT-100x100	100x100	0.9-1.2
SCT-150x100	150x100	0.9-1.2
SCT-225x100	225x100	1.0-1.2
SCT-300x100	300x100	1.2-1.5
SCT-150x150	150x150	0.9-1.2
SCT-225x150	225x150	1.0-1.2
SCT-300x150	300x150	1.2-1.5
SCT-225x225	225x225	1.0-1.2



Thickiess:0.7,0.9,1.0,1.2,1.5mm

Note: Any Specific Size Can Also Be Offered.
All Dimensions Are In "Mm"
Thickness Is Based On Material Available.

CABLE LADDER

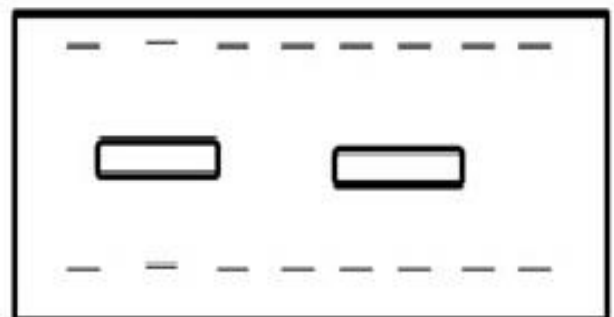
Note: Any Specific Size Can Also Be Offered.
All Dimensions Are In "Mm"
Thickness Is Based On Material Available.

DUTY LADDER TYPE CABLE TRAYS

CODE NO	W	H	THK
ABTI-LLT-100	100	50	1.2
ABTI-LLT-150	150	50	1.2
ABTI-LLT-225	225	50	1.2
ABTI-LLT-300	300	50	1.2
ABTI-LLT-450	450	50	1.2
ABTI-LLT-600	600	50	1.2
ABTI-LLT-750	750	50	1.2

CODE NO	W	H	THK
ABTI-MLT-150	150	100	1.2-2.0
ABTI-MLT-225	225	100	1.2-2.0
ABTI-MLT-300	300	100	1.2-2.0
ABTI-MLT-450	450	100	1.5-2.0
ABTI-MLT-600	600	100	1.5-2.0
ABTI-MLT-750	750	100	1.5-2.0
ABTI-MLT-900	900	100	1.5-2.0

CODE NO	W	H	THK
ABTI-HLT-150	150	125	1.2-2.0
ABTI-HLT-225	225	125	1.2-2.0
ABTI-HLT-300	300	125	1.2-2.0
ABTI-HLT-450	450	125	1.5-2.0
ABTI-HLT-600	600	125	1.5-2.0
ABTI-HLT-750	750	125	1.5-2.0
ABTI-HLT-900	900	125	1.5-2.0



Thickiess:1.2,1.5,2.0 mm

Note: Any Specific Size Can Also Be Offered.
All Dimensions Are In "Mm"
Thickness Is Based On Material Available.

LADDER TYPE 45° BEND

CODE NO	W	THK
ABTI-LT45°-50	100	1.2
ABTI-LT45°-50	150	1.2
ABTI-LT45°-50	225	1.2
ABTI-LT45°-50	300	1.2
ABTI-LT45°-50	450	1.5
ABTI-LT45°-50	600	1.5
ABTI-LT45°-50	750	1.5

CODE NO	W	THK
ABTI-LT45°-100	150	1.5-2.0
ABTI-LT45°-100	225	1.5-2.0
ABTI-LT45°-100	300	1.5-2.0
ABTI-LT45°-100	450	1.5-2.0
ABTI-LT45°-100	600	1.5-2.0
ABTI-LT45°-100	750	1.5-2.0
ABTI-LT45°-100	900	1.5-2.0

CODE NO	W	THK
ABTI-LT45°-125	150	1.5-2.0
ABTI-LT45°-125	225	1.5-2.0
ABTI-LT45°-125	300	1.5-2.0
ABTI-LT45°-125	450	1.5-2.0
ABTI-LT45°-125	600	1.5-2.0
ABTI-LT45°-125	750	1.5-2.0
ABTI-LT45°-125	900	1.5-2.0



Thickiess:1.2,1.5,2.0 mm

Note: Any Specific Size Can Also Be Offered.
All Dimensions Are In "Mm"
Thickness Is Based On Material Available.

LADDER TYPE 90° BEND

CODE NO	W	THK
ABTI-LT90°-50	100	1.2
ABTI-LT90°-50	150	1.2
ABTI-LT90°-50	225	1.2
ABTI-LT90°-50	300	1.2
ABTI-LT90°-50	450	1.5
ABTI-LT90°-50	600	1.5
ABTI-LT90°-50	750	1.5

CODE NO	W	THK
ABTI-LT90°-100	150	1.5-2.0
ABTI-LT90°-100	225	1.5-2.0
ABTI-LT90°-100	300	1.5-2.0
ABTI-LT90°-100	450	1.5-2.0
ABTI-LT90°-100	600	1.5-2.0
ABTI-LT90°-100	750	1.5-2.0
ABTI-LT90°-100	900	1.5-2.0

CODE NO	W	THK
ABTI-LT90°-125	150	1.5-2.0
ABTI-LT90°-125	225	1.5-2.0
ABTI-LT90°-125	300	1.5-2.0
ABTI-LT90°-125	450	1.5-2.0
ABTI-LT90°-125	600	1.5-2.0
ABTI-LT90°-125	750	1.5-2.0
ABTI-LT90°-125	900	1.5-2.0



Thickiess:1.2,1.5,2.0 mm

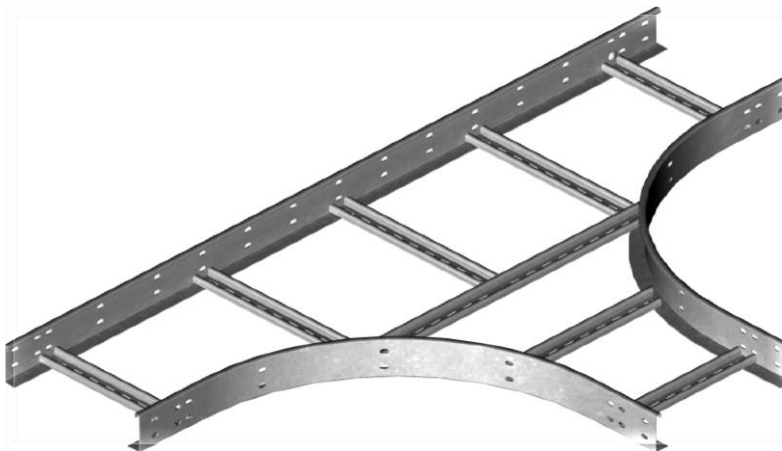
Note: Any Specific Size Can Also Be Offered.
All Dimensions Are In "Mm"
Thickness Is Based On Material Available.

LADDER TYPE TEE

CODE NO	W	THK
ABTI-LT-TEE-50	100	1.2
ABTI-LT-TEE-50	150	1.2
ABTI-LT-TEE-50	225	1.2
ABTI-LT-TEE-50	300	1.2
ABTI-LT-TEE-50	450	1.5
ABTI-LT-TEE-50	600	1.5
ABTI-LT-TEE-50	750	1.5

CODE NO	W	THK
ABTI-LT-TEE-100	150	1.5-2.0
ABTI-LT-TEE-100	225	1.5-2.0
ABTI-LT-TEE-100	300	1.5-2.0
ABTI-LT-TEE-100	450	1.5-2.0
ABTI-LT-TEE-100	600	1.5-2.0
ABTI-LT-TEE-100	750	1.5-2.0
ABTI-LT-TEE-100	900	1.5-2.0

CODE NO	W	THK
ABTI-LT-TEE-125	150	1.5-2.0
ABTI-LT-TEE-125	225	1.5-2.0
ABTI-LT-TEE-125	300	1.5-2.0
ABTI-LT-TEE-125	450	1.5-2.0
ABTI-LT-TEE-125	600	1.5-2.0
ABTI-LT-TEE-125	750	1.5-2.0
ABTI-LT-TEE-125	900	1.5-2.0



Thickiess:1.2,1.5,2.0 mm

Note: Any Specific Size Can Also Be Offered.
All Dimensions Are In "Mm"
Thickness Is Based On Material Available.

LADDER TYPE INSIDE RISERS

CODE NO	W	THK
ABTI-LIR-50	100	1.2
ABTI-LIR-50	150	1.2
ABTI-LIR-50	225	1.2
ABTI-LIR-50	300	1.2
ABTI-LIR-50	450	1.5
ABTI-LIR-50	600	1.5
ABTI-LIR-50	750	1.5

CODE NO	W	THK
ABTI-LIR-100	150	1.5-2.0
ABTI-LIR-100	225	1.5-2.0
ABTI-LIR-100	300	1.5-2.0
ABTI-LIR-100	450	1.5-2.0
ABTI-LIR-100	600	1.5-2.0
ABTI-LIR-100	750	1.5-2.0
ABTI-LIR-100	900	1.5-2.0

CODE NO	W	THK
ABTI-LIR-125	150	1.5-2.0
ABTI-LIR-125	225	1.5-2.0
ABTI-LIR-125	300	1.5-2.0
ABTI-LIR-125	450	1.5-2.0
ABTI-LIR-125	600	1.5-2.0
ABTI-LIR-125	750	1.5-2.0
ABTI-LIR-125	900	1.5-2.0



Thickiess:1.2,1.5,2.0 mm

Note: Any Specific Size Can Also Be Offered.
All Dimensions Are In "Mm"
Thickness Is Based On Material Available.

LADDER TYPE OUTSIDED RISERS

CODE NO	W	THK
ABTI-LOR-50	100	1.2
ABTI-LOR-50	150	1.2
ABTI-LOR-50	225	1.2
ABTI-LOR-50	300	1.2
ABTI-LOR-50	450	1.5
ABTI-LOR-50	600	1.5
ABTI-LOR-50	750	1.5

CODE NO	W	THK
ABTI-LOR-100	150	1.5-2.0
ABTI-LOR-100	225	1.5-2.0
ABTI-LOR-100	300	1.5-2.0
ABTI-LOR-100	450	1.5-2.0
ABTI-LOR-100	600	1.5-2.0
ABTI-LOR-100	750	1.5-2.0
ABTI-LOR-100	900	1.5-2.0

CODE NO	W	THK
ABTI-LOR-125	150	1.5-2.0
ABTI-LOR-125	225	1.5-2.0
ABTI-LOR-125	300	1.5-2.0
ABTI-LOR-125	450	1.5-2.0
ABTI-LOR-125	600	1.5-2.0
ABTI-LOR-125	750	1.5-2.0
ABTI-LOR-125	900	1.5-2.0



Thickiess:1.2,1.5,2.0 mm

Note: Any Specific Size Can Also Be Offered.
All Dimensions Are In "Mm"
Thickness Is Based On Material Available.

LADDER TYPE REDUCERS-SIDE CHANNEL 50



CODE NO	W	THK
ABTI-LR50-150×100	150×100	1.2-2.0
ABTI-LR50-255×100	255×100	1.2-2.0
ABTI-LR50-300×100	300×100	1.2-2.0
ABTI-LR50-450×100	450×100	1.2-2.0
ABTI-LR50-600×100	600×100	1.2-2.0
ABTI-LR50-750×100	750×100	1.5-2.0
ABTI-LR50-225×150	225×150	1.2-2.0
ABTI-LR50-300×150	300×150	1.2-2.0
ABTI-LR50-450×150	450×150	1.2-2.0
ABTI-LR50-600×150	600×150	1.2-2.0
ABTI-LR50-750×150	750×150	1.5-2.0
ABTI-LR50-300×225	300×225	1.2-2.0
ABTI-LR50-450×225	450×225	1.5-2.0
ABTI-LR50-600×225	600×225	1.2-2.0
ABTI-LR50-750×225	750×225	1.5-2.0
ABTI-LR50-450×300	450×300	1.2-2.0
ABTI-LR50-600×300	600×300	1.2-2.0
ABTI-LR50-750×300	750×300	1.5-2.0
ABTI-LR50-600×450	600×450	1.2-2.0
ABTI-LR50-750×450	750×450	1.5-2.0
ABTI-LR50-750×600	750×600	1.5-2.0

Thickiess:1.2,1.5,2.0 mm

Note: Any Specific Size Can Also Be Offered.
All Dimensions Are In "Mm"
Thickness Is Based On Material Available.

LADDER TYPE REDUCERS-SIDE CHANNEL 100



CODE NO	W	THK
ABTI-LR100-225x150	225x150	1.2-2.0
ABTI-LR100-300x150	300x150	1.2-2.0
ABTI-LR100-450x150	450x150	1.2-2.0
ABTI-LR100-600x150	600x150	1.2-2.0
ABTI-LR100-750x150	750x150	1.5-2.0
ABTI-LR100-900x150	900x150	1.5-2.0
ABTI-LR100-300x225	300x225	1.2-2.0
ABTI-LR100-450x225	450x225	1.5-2.0
ABTI-LR100-600x225	600x225	1.2-2.0
ABTI-LR100-750x225	750x225	1.5-2.0
ABTI-LR100-900x225	900x225	1.5-2.0
ABTI-LR100-450x300	450x300	1.2-2.0
ABTI-LR100-600x300	600x300	1.2-2.0
ABTI-LR100-750x300	750x300	1.5-2.0
ABTI-LR100-900x300	900x300	1.5-2.0
ABTI-LR100-600x450	600x450	1.2-2.0
ABTI-LR100-750x450	750x450	1.5-2.0
ABTI-LR100-900x450	900x450	1.5-2.0
ABTI-LR100-750x600	750x600	1.5-2.0
ABTI-LR100-900x600	900x600	1.5-2.0
ABTI-LR100-900x750	900x750	1.5-2.0

Thickiess:1.2,1.5,2.0 mm

Note: Any Specific Size Can Also Be Offered.
All Dimensions Are In "Mm"
Thickness Is Based On Material Available.

LADDER TYPE REDUCERS-SIDE CHANNEL 125



CODE NO	W	THK
ABTI-LR125-225×150	225×150	1.2-2.0
ABTI-LR125-300×150	300×150	1.2-2.0
ABTI-LR125-450×150	450×150	1.2-2.0
ABTI-LR125-600×150	600×150	1.2-2.0
ABTI-LR125-750×150	750×150	1.5-2.0
ABTI-LR125-900×150	900×150	1.5-2.0
ABTI-LR125-300×225	300×225	1.2-2.0
ABTI-LR125-450×225	450×225	1.5-2.0
ABTI-LR125-600×225	600×225	1.2-2.0
ABTI-LR125-750×225	750×225	1.5-2.0
ABTI-LR125-900×225	900×225	1.5-2.0
ABTI-LR125-450×300	450×300	1.2-2.0
ABTI-LR125-600×300	600×300	1.2-2.0
ABTI-LR125-750×300	750×300	1.5-2.0
ABTI-LR125-900×300	900×300	1.5-2.0
ABTI-LR125-600×450	600×450	1.2-2.0
ABTI-LR125-750×450	750×450	1.5-2.0
ABTI-LR125-900×450	900×450	1.5-2.0
ABTI-LR125-750×600	750×600	1.5-2.0
ABTI-LR125-900×600	900×600	1.5-2.0
ABTI-LR125-900×750	900×750	1.5-2.0

Thickiess:1.2,1.5,2.0 mm

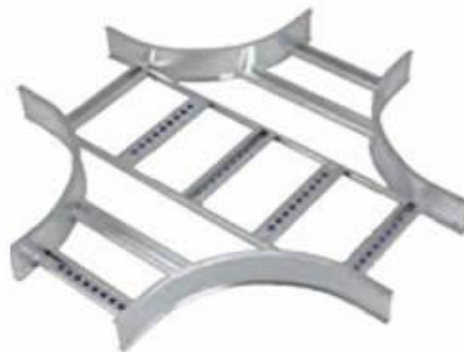
Note: Any Specific Size Can Also Be Offered.
All Dimensions Are In "Mm"
Thickness Is Based On Material Available.

LADDER TYPE CROSS

CODE NO	W	THK
ABTI-LC-50	100	1.2
ABTI-LC-50	150	1.2
ABTI-LC-50	225	1.2
ABTI-LC-50	300	1.2
ABTI-LC-50	450	1.5
ABTI-LC-50	600	1.5
ABTI-LC-50	750	1.5

CODE NO	W	THK
ABTI-LC-100	150	1.5-2.0
ABTI-LC-100	225	1.5-2.0
ABTI-LC-100	300	1.5-2.0
ABTI-LC-100	450	1.5-2.0
ABTI-LC-100	600	1.5-2.0
ABTI-LC-100	750	1.5-2.0
ABTI-LC-100	900	1.5-2.0

CODE NO	W	THK
ABTI-LC-125	150	1.5-2.0
ABTI-LC-125	225	1.5-2.0
ABTI-LC-125	300	1.5-2.0
ABTI-LC-125	450	1.5-2.0
ABTI-LC-125	600	1.5-2.0
ABTI-LC-125	750	1.5-2.0
ABTI-LC-125	900	1.5-2.0



Thickiess:1.2,1.5,2.0 mm

Note: Any Specific Size Can Also Be Offered.
All Dimensions Are In "Mm"
Thickness Is Based On Material Available.

COVERS FOR LADDER TYPE CABLE TRAY

PLAIN TYPE

CODE NO	W	THK
ABTI-PLC-50	100	1.0-1.5
ABTI-PLC-75	150	1.0-1.5
ABTI-PLC-100	225	1.0-1.5
ABTI-PLC-150	300	1.0-1.5
ABTI-PLC-225	450	1.2-2.0
ABTI-PLC-300	600	1.2-2.0
ABTI-PLC-450	750	1.5-2.0
ABTI-PLC-600	900	1.5-2.0

VENTILATED TYPE

CODE NO	W	THK
ABTI-VLC-50	100	1.0-1.5
ABTI-VLC-75	150	1.0-1.5
ABTI-VLC-100	225	1.0-1.5
ABTI-VLC-150	300	1.0-1.5
ABTI-VLC-225	450	1.2-2.0
ABTI-VLC-300	600	1.2-2.0
ABTI-VLC-450	750	1.5-2.0
ABTI-VLC-600	900	1.5-2.0



Thickiess:1.0,1.2,1.5mm

Note: Any Specific Size Can Also Be Offered.
All Dimensions Are In "Mm"
Thickness Is Based On Material Available.

Accessories

Note: Any Specific Size Can Also Be Offered.
All Dimensions Are In "Mm"
Thickness Is Based On Material Available.

SUPPORTS AND BRACKETS



SQUARE WASHER



**ONE HOLE
CORNER ANGLE**



**TWO HOLE
SPLICE**



**TWO HOLE
CORNER ANGLE**



**THREE HOLE
SPLICE PLATE**



**THREE HOLE
CORNEL ANGLE**



**THREE HOLE
"Z" SUPPORT**



**THREE HOLE
"U" SUPPORT**



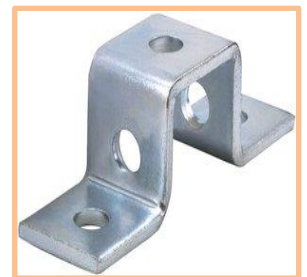
**FOUR HOLE
SPLICE PLATE**



**FOUR HOLE
CORNEL ANGLE**



**FIVE HOLE
SPLICE PLATE**



**FIVE HOLE
"U" SUPPORT**

Note: Any Specific Size Can Also Be Offered.
All Dimensions Are In "Mm"
Thickness Is Based On Material Available.

FASTNERS



CARRIAGE BOLT



SCREWS



HEXAGONAL BOLT



**SCREW WITH
WASHER**



HEXAGONAL NUT



SQUARE NUT



FLAT WASHER



SPRING WASHER



**SHORT SPRING
NUT**



**MEDIUM SPRING
NUT**



**LONG SPRING
NUT**



**PLAIN SPRING
NUT**



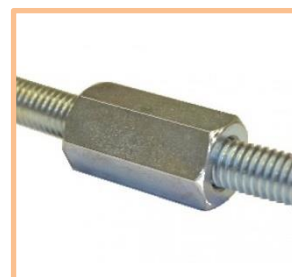
THREADED ROD



**THREADED ROD
WITH NUTS**



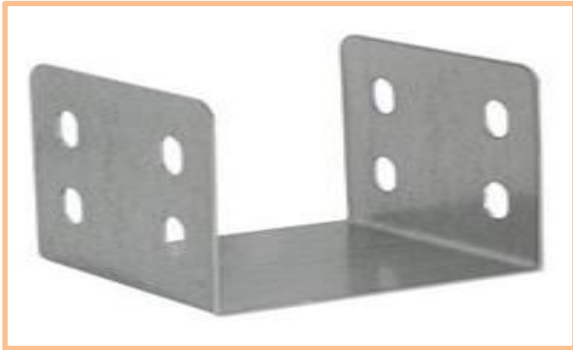
**STUD
CONNECTOR**



**ROD WITH STUD
CONNECTOR**

Note: Any Specific Size Can Also Be Offered.
All Dimensions Are In "Mm"
Thickness Is Based On Material Available.

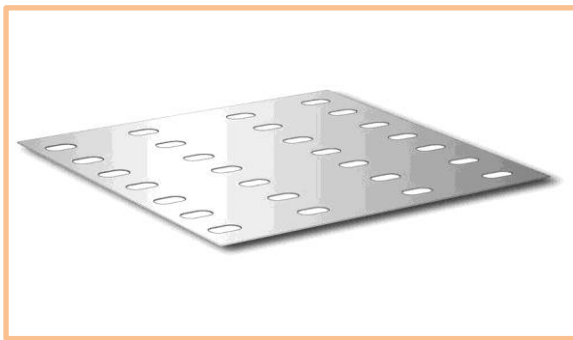
COUPLERS



COUPLER FOR TRUNKING



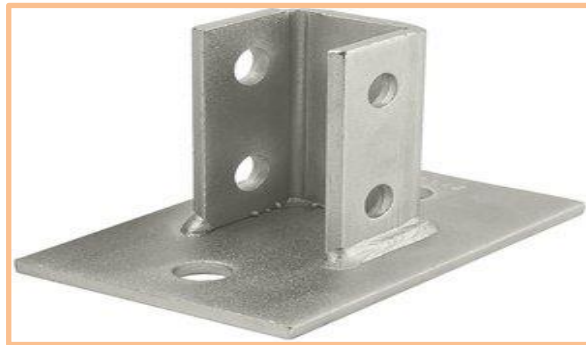
STRAIGHT COUPLERS FOR TRAY



FISH PLATE



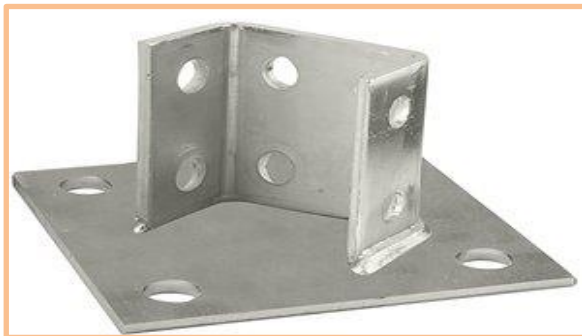
BRACKET FOR TRAY



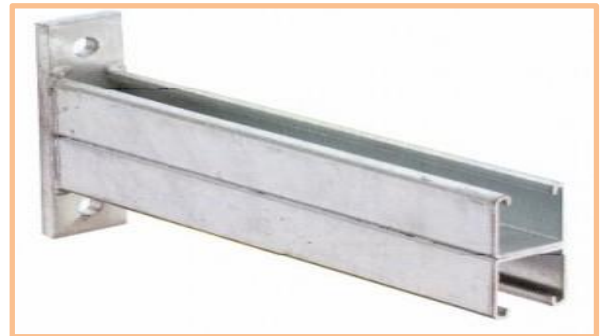
SIX HOLE FLAT BASE POST



SINGLE CHANNELS



EIGHT HOLE FLAT BASE POST



DUOBLE CHANNELS

Note: Any Specific Size Can Also Be Offered.
All Dimensions Are In "Mm"
Thickness Is Based On Material Available.

Our services

Our products enjoy the excellent reputation in domestic markets. The recipients of our products are individual customers, Companies & Public utility Institutions.

Please visit our industry, if you are guided by quality when choosing a product.

- 1. If the manufacturer's experience means the guarantee of full satisfaction for you.**
- 2. If you demand more.**
- 3. If you expect the manufacturer to adapt to your individual needs.**
- 4. If you are an investor looking for genuine products.**

Our products, which do not tend to lose their desired properties overtime.

P.O. Box : 70

Postal Code : 319

GSM : +968 91393903

GSM : +968 91357159

Saham

Sultanate of Oman

ص ب : 70

الرمز البريدي : 319

صح

Saham, Al-Batinah, Oman Tel: +968 26 854411 Fax: +968 26 855744

Email: albadigroup@gmail.com

Website: albadigroup.com